

# Competency Map

MENA Region



German Water  
Partnership

Solutions you can trust.



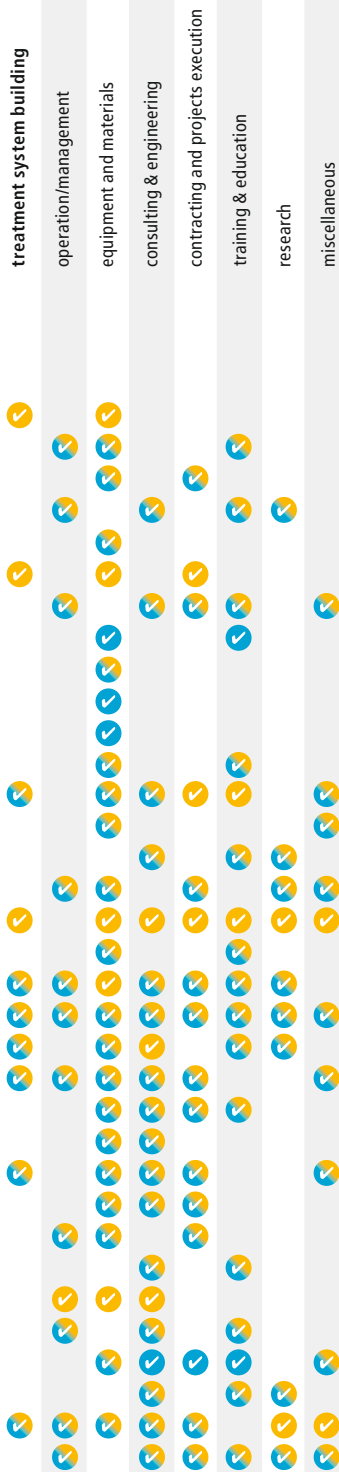
German Water Partnership (GWP) is the strong network of the German water sector representing 350 members from water industry and research. The network includes water utilities, commercial enterprises, governmental organizations, non-governmental organizations, scientific institutions and water-related associations. By covering the complete water cycle, GWP is the central point of contact for foreign partners and is being actively supported by five German federal ministries.

Since 2008 this network has been acting as a central coordination office for foreign clients and decision makers seeking German expertise in the water sector. The main goal of GWP is to establish German expertise and quality worldwide and to position German water competencies in international markets. Thus, integrated and sustainable approaches meet the problems and challenges of water management all over the world and the use of innovative technologies and German know-how is being improved worldwide. The members of GWP are dedicated to a set of guiding values and common objectives when providing services to their international clients and partners.

The members of GWP are organized in 12 regional sections, each of which focuses on a specific country or region. Objectives of these regional sections are to cultivate contacts with partners and decision makers in those countries, to kick off projects and work out custom-tailored solutions in water management. These regional sections are the central contact point for all enquiries placed by foreign businesses, organizations and governments. Furthermore, GWP offers its members the participation in working groups, to work at different aspects of water management.

More information about German Water Partnership, its members and activities can be found at:

[www.germanwaterpartnership.de](http://www.germanwaterpartnership.de)



## Competencies in water & wastewater

ATB WATER GmbH	4
Aerzener Maschinenfabrik GmbH	5
Aqseptence Group GmbH	6
Barthauer Consulting International GmbH	7
Binder GmbH	8
BIOGEST AG	9
CONSULAQUA Hamburg	10
F.A.S.T. GmbH	11
FUCHS Enprotec GmbH	12
GEH Wasserchemie GmbH & Co. KG	13
Gebrüder Heyl Vertriebsgesellschaft	14
Hermann Sewerin GmbH	15
HUBER SE	16
HYDAC Process Technology GmbH	17
inter 3 Institute for Resource Management	18
INTEWA GmbH	19
Jäger Umwelt-Technik GmbH	20
JUMO GmbH & Co.KG	21
KLEINE Solutions GmbH	22
KSB SE & Co. KGaA	23
MARTIN Systems GmbH	24
MENA WATER FZC	25
Mitsubishi Electric Europe B.V.	26
NIVUS GmbH	27
PHOENIX CONTACT GmbH & Co. KG	28
Rädlinger primus line GmbH	29
PWT Wasser- und Abwassertechnik GmbH	30
p2m berlin GmbH	31
Rudolf Messner Umwelttechnik AG	32
Sachsen Wasser GmbH	33
STÜWA	34
TU Berlin, FG Umweltverfahrenstechnik	35
Waterleau Deutschland GmbH	36
WEE Pros GmbH	37





## Treatment, purification & reuse of wastewater



Our company was established in 1999 in Germany, and since then ATB has become one of the market leaders in the field of decentralised wastewater treatment in Germany and also world-wide. Besides the production and sales of complete small and small scale sewage treatment plants for municipal and industrial applications, our company also offers the full range of equipment for biological wastewater treatment and water reuse. ATB is operating its own production and research facilities inside the EU. Our experts support clients during all steps of the engineering process. Please don't hesitate to contact us, we will be happy to plan your special project.

**ATB WATER GmbH**  
Südstraße 2  
32457 Porta Westfalica  
Germany

**T** +49 5731 30230-0  
**F** +49 5731 30230-30  
**E** [info@atbwater.com](mailto:info@atbwater.com)  
**W** [www.atbwater.com](http://www.atbwater.com)

With more than 100,000 units sold, ATB is the undisputed market leader in Germany.



# AERZEN

## Performance<sup>3</sup>. How efficient is your aeration really?



Three blower technologies, one goal: maximum efficiency. Performance<sup>3</sup> means not only the product portfolio consisting of the Delta Blower positive displacement blower, the Delta Hybrid rotary lobe compressor, and the Aerzen Turbo turbo blower, but also and especially the individual solution and the best possible interplay of technologies. Because every technology has its strengths, as well as its physical limits. For example, turbo blowers stand out from a design standpoint due to their unbeatable energy efficiency. At the same time, the control range of turbo machines is limited to between 40% and 100%, and the efficiency decreases under partial-load operation. This is where rotary piston machines really shine, however. They offer a control range of 25% to 100% and offer almost the same level of efficiency even under partial-load operation. When searching for the most efficient solution, it is therefore necessary to configure the machine technologies to meet the individual requirements of each plant. Whereas it used to be common practice to install blowers of just one size, today's plants often feature a mix of different sizes or even technologies. Savings of up to 30% are possible. The AERZEN Performance<sup>3</sup> concept offers you a customised solution based on blower, hybrid, and turbo technologies. It is the most efficient, high-performance, and flexible blower solution ever developed for oxygen supply.

**Aerzener  
Maschinenfabrik GmbH**  
Reherweg 28  
31855 Aerzen  
Germany

**T** +49 5154 81-0  
**F** +49 5154 81-9191  
**E** [info@aerzener.de](mailto:info@aerzener.de)  
**W** [www.aerzen.com](http://www.aerzen.com)

AERZEN – blowers,  
compressors and  
vacuum solutions



# Aqseptence Group

## Water processing solutions water treatment



Our brands for reliable wastewater technology and clean drinking water: Passavant®, Noggerath® and Geiger®. Concentrated competence and committed employees, extensive experience and an individual, solution-oriented approach – this is the foundation on which the success story of the Aqseptence Group was written. Whether for renovation or new construction, whether for wastewater treatment or industrial water extraction, whether for individual components or system solutions,

whether for municipal operators or for industrial companies: We solve tasks individually and guarantee that all local, budgetary and environmental conditions are fulfilled optimally and efficiently. Because with countless reference projects worldwide and a broad portfolio of in-house manufactured and innovative machines, we are able to meet your individual wishes and specific requirements like hardly any other company.

Our solutions of the traditional brands Passavant®, Noggerath® and Geiger® cover the entire clarification and treatment process – with low maintenance, versatile and flexible:

- › Pumping stations: Shut-off devices, Coarse screen
- › Mechanical Pre-treatment: Coarse sieving, Fine screening/sieving, Screenings treatment, Sand and sewer sand treatment, sewage receiving stations
- › Energy & process efficiency (in preliminary sedimentation, biology + advanced levels):
- › Preliminary sedimentation by CarbonExtract® process, Aeration, Aqualogic®, Adaptive Inlet System for Secondary Clarifiers
- › Service (Customer Service & Spare Parts)

**Aqseptence Group GmbH**  
Div. Water Processing Solutions  
Passavant-Geiger-Str. 1  
65326 Aarbergen, Germany

**T** +49 6120 28-0  
**F** +49 6120 28-2182  
**E** Philippe.Anstotz@  
aqseptence.com  
**W** www.aqseptence.com

Water.Resource.Future

# BARTHAUER

---

## INTERNATIONAL

### Expertise – solutions – services

Barthauer Consulting International GmbH is a service provider supporting the successful and efficient use of IT solutions in the field of infrastructure and data management. We offer capacity management tailored to the region: a process for determining and planning the required IT resources through the direct transfer of know-how on site. The company is part of the BARTHAUER GROUP. Professional IT infrastructure management solutions are developed and implemented by our team with the goal of making information available over the long term.



Data is a company's most valuable asset, but its importance is often underestimated. Realise the full potential of your data with consultancy – gain the greatest possible benefits from your database. We support you improve internal and external data flows and processes. With our solutions, you have access to all relevant information anytime and anywhere without a lot of effort. Thereby you are put in a position to make faster and better decisions. You save time and money. Through a comprehensive analysis of your company's processes and systems, we determine your potential for improvements.

We offer established software solutions – for specific disciplines as well as interdisciplinary tasks – that can be integrated seamlessly into your existing IT infrastructure. In addition, we offer tailor-made individual solutions. Our international developer teams address your specific requirements and develop demand-driven, innovative applications.

**Barthauer Consulting  
International GmbH**

Pillaustr. 1a  
38126 Braunschweig  
Germany

**T** +49 531 23533-0  
**F** +49 531 23533-99  
**E** [info@barthauer.de](mailto:info@barthauer.de)  
**W** <http://barthauer-international.com>

IT solutions in the field of  
infrastructure and data  
management for communities  
and industries



BETTER CONTROL. BETTER ENVIRONMENT.

## Precise aeration control improves effluent quality

VACOMASS® is a unique modular system for the control of air supply and air distribution to different aeration tanks in sewage treatment plants. The system mainly consists of:



- › Thermal mass flow meter
- › Various types of precise control valves with extremely low pressure drop and high repeatability
- › Smart control system for DO-control and improved nitrogen removal as well as diffuser maintenance – the system utilizes artificial intelligence through complex algorithms that are very user-friendly as a stand-alone system or working alongside an DCS

The VACOMASS® system provides high process stability, sustainability, low maintenance, ease of use and integration while maximizing the energy cost saving. Many systems are world-wide in operation for more than 20 years. Remote access for support and service are provided.

Beside aeration control, Binder also offers biogas flow meter and analyzer for monitoring gas production and quality from sludge digestion.

**Binder GmbH**  
Buchbrunnweg 18  
89081 Ulm  
Germany

**T** +49 731 18998-0  
**F** +49 731 18998-88  
**E** support@bindergroup.info  
**W** www.bindergroup.info

Control valves for aeration air,  
load-dependent process  
control, artificial intelligence,  
biogas flow meter, biogas  
analyzer



## Solutions for wastewater and storm water treatment

Since 1976 we are providing wastewater solutions for national and international customers. From the headquarter in Taunusstein we develop and produce high-quality stainless-steel solutions for a long working life. Our more than 500 wastewater treatment plants all around the world are a proof for our quality and experience.



BIOGEST is known as an expert in design and manufacture of technical equipment for Sequence Batch Reactor (SBR) systems, which are most suitable for small but as well for large wastewater treatment plants up to multiple hundred thousand equivalent values. With our experienced engineers we can offer cost effective and best technical solutions. We have realized more than twenty wwtp in Africa and Middle East countries.

From 1988 on BIOGEST also developed various solutions for stormwater management such as flow regulators and storm tank cleaning systems followed by multiple other products for flood protection. Since then, BIOGEST became one of the leading suppliers for rainwater solutions worldwide, which leads to projects all over the world and in Jordan.

**BIOGEST AG**  
Siemenstraße 1  
D-65232 Taunusstein  
Germany

**T** +49 6128 9758-0  
**F** +49 6128 9758-58  
**E** [info@biogest.com](mailto:info@biogest.com)  
**W** [www.biogest.com](http://www.biogest.com)

We are producing long lasting technologies for waste water and storm water treatment.



## Water & wastewater services – hands-on solutions

CONSULAQUA Hamburg Beratungsgesellschaft mbH (CAH), the interface between a public utility and the private consulting sector is a 100 % subsidiary company of HAMBURG WASSER – Northern Germany's largest public water supply and wastewater utility. CAH has access to knowledge and expertise from over 175 years of service to currently more than two million people. The Utility Knowledge Transfer is applied using practical and customised solutions for technical and commercial challenges appearing throughout the water cycle and is internationally implemented by hands-on experts, following a Peer-to-Peer Approach.

Our customised solutions throughout the water cycle include:

- › Ground water modelling and well field management
- › Hydraulic optimisation and improvement of energy efficiency
- › Water loss reduction – technical and commercial
- › Sewer rehabilitation
- › Process optimisation for water and wastewater treatment
- › O&M procedures and asset management
- › Energy Efficiency Improvement
- › Business process optimisation



Our Utility Knowledge Transfer is facilitated by our experts through:

- › Training workshops, on-the-job and vocational trainings of operational staff
- › Coaching and Mentoring
- › Twinning of expert staff with HAMBURG WASSER Practitioners on technical and managerial level

We work in various countries in South-East Europe, Latin America, Middle East and Northern Africa, Sub-Saharan Africa, and the Caribbean.

**CONSULAQUA Hamburg**  
**Beratungsgesellschaft mbH**  
Ausschläger Elbdeich 2  
20539 Hamburg  
Germany

**T** +49 40 7888-89555  
**F** +49 40 7888-189999  
**E** consulting@consulaqua.de  
**W** www.consulaqua.de

Consulting services for  
Integrated Utility Management  
incl. Design review, Capacity  
building, etc.



## Intelligent water loss management



F.A.S.T. GmbH is a technology leader for leak detection solutions and water loss management. Founded 35 years ago in southern Germany, F.A.S.T. has always been faithful to its core values: robust and reliable devices, innovative and sustainable

solutions and very close cooperation with the customer. F.A.S.T. develops, manufactures and repairs all devices in house, which guarantees the best quality control and very short repair times.

F.A.S.T. offers a very large portfolio of leak detection equipment, ranging from monitoring solutions over acoustic devices to flow meters and tracer gas technology. Lokal 400 and Lokal 200 PC are powerful correlators able to find the leak spot quickly, precisely and reliably. The Aqua M series are geophones and listening devices that offer very versatile noise filtering options. Aqua M stands for versatile leak detection with a very broad range of applications. BIDI Loggers are smart noise loggers designed to monitor water networks efficiently. BIDI Loggers can operate completely autonomously, they will detect leaks as soon as they appear and transmit the leak status to the WaterCloud, which is accessible to the user from anywhere in the world. F.A.S.T. BIDI Loggers prevent larger damage to the infrastructure and save cost. PipeMic is an acoustic pipe inspection device that can find even the smallest leaks with high ambient noise.

F.A.S.T. is constantly developing new devices and solutions always aiming to conserve precious water and build more sustainable infrastructures.

**F.A.S.T. GmbH**  
Bössingerstr. 36  
74243 Langenbrettach  
Germany

**T** +49 7946 92100-30  
**E** [info@fastgmbh.de](mailto:info@fastgmbh.de)  
**W** [www.fastgmbh.de](http://www.fastgmbh.de)

Leak detection solutions and  
water loss management for  
drinking water networks



## FUCHS Aerators for Wastewater Treatment



We, the FUCHS Enprotec GmbH, are a German mechanical engineering company active worldwide in the treatment of wastewater and sewage sludge. In our company headquarters, we develop and produce innovative products for aeration and mixing and provide high-quality solutions for municipal as well as industrial applications. For every single project we work collaboratively with consulting engineers, plant managers and operators to design and manufacture the best treatment solution.

FUCHS Aerators are self-aspirating aerators, combining fine-bubble deep aeration with a strong horizontal flow pattern. They ensure optimal aeration and mixing of municipal as well as industrial wastewater. Thus, they are ideal for use in activated sludge basins, aerated lagoons and equalization tanks. FUCHS Aerators are first choice for retrofit. They can be easily used as supplementary aeration or replace existing old aeration systems.

The use of our own proven technologies is one of the reasons for our success. With projects realized in about 60 countries and more than 3,500 installed plants. Thousands of these quality products "Made in Germany" are used throughout the world, they are trusted for their excellent performance, reliability and long lifetime.

**FUCHS Enprotec GmbH**  
Stocktal 2  
56727 Mayen  
Germany

**T** +49 2651 8004-0  
**F** +49 2651 8004-135  
**E** [info@fuchswater.com](mailto:info@fuchswater.com)  
**W** [www.fuchswater.com](http://www.fuchswater.com)

Aeration and Mixing



## Iron hydroxide adsorbents for water treatment



GEH Wasserchemie is the inventor and manufacturer of granular ferric hydroxide (GEH®) for water treatment. The selective removal of Arsenic in drinking water treatment led to the development of GEH®. Since then, we added to our portfolio several applications in the treatment of mineral water, surface water, rainwater and wastewater, like the removal of Vanadium, Phosphate and several heavy metals.

Since our company was founded in 1997, we have been a world-leading provider of iron-based adsorbents. We manufacture our products at our company headquarters in Osnabrück, Germany, and deliver worldwide. Thanks to our long-term international partnerships, we can guarantee an optimum on-site service, as well as being present for our customers across the globe.

**GEH Wasserchemie GmbH  
& Co. KG**

Adolf-Koehne-Straße 4  
49090 Osnabrueck  
Germany

**T** +49 541 122009  
**E** [simon.kellmann@geh-wasserchemie.com](mailto:simon.kellmann@geh-wasserchemie.com)  
**W** [www.geh-wasserchemie.com](http://www.geh-wasserchemie.com)

Drinking Water, Mineral Water,  
Surface Water, Rainwater,  
Wastewater



## Tradition and future by your side

As an expert in industrial water treatment, we create process-oriented applications, individual system solutions through to specific product types. We support customers in all parts of the world and permanently expand into new markets. Our instruments and components are suited for applications, as boiler feed water or cooling water control, in different industries as food & beverage, pharmaceutical & chemical as well in the municipal drinking water and energy sector. Special multi-parameter measuring & control



modules can be constructed according to the technical and communication requirements, e. g. in the field of cooling resp. boiler feed water preparation.

Our Core Competences:

- › Online Analyzers TESTOMAT for water-hardness, chlorine, chlorine dioxide, iron, polymers, phosphate, silicate, sulphite ...
- › Micro-Controllers for water treatment plants, as softeners, RO-plants, dosing systems.
- › Monitors and probes for conductivity, pH and ORP.
- › Test Kits for quick and reliable control of different water parameters.
- › Multi-parameter Photometers and customized service sets for onsite water quality check.
- › Ozone Generators, AOP systems and UV-Systems for water treatment, disinfection & sanitization; waste water purification.

**Gebrüder Heyl Vertriebs-  
gesellschaft für Innovative  
Wasseraufbereitung mbH**

Max-Planck-Str. 16  
31135 Hildesheim, Germany

**T** +49 5121 7609-0  
**F** +49 5121 7609-44  
**E** [vertrieb@heylnemeris.de](mailto:vertrieb@heylnemeris.de)  
**W** [www.neomeris.de](http://www.neomeris.de)

Water analyzers & monitors,  
UV- & ozone systems



## Technology leader for gas and water leak detection equipment



The Sewerin group of companies is an internationally successful, family owned group with its headquarters in Gütersloh, Germany. The core business is the development, production and global distribution of electronic measuring equipment for the gas and water supply and distribution industry. In the water segment Sewerin is offering products for the professional water leak detection especially electro-acoustic devices, noise logger, correlators and devices for tracer gas detection and flow analysis.

**Hermann Sewerin GmbH**  
Robert-Bosch-Str. 3  
33334 Gütersloh  
Germany

**T** +49 5241 934-0  
**F** +49 5241 934-444  
**E** [info@sewerin.com](mailto:info@sewerin.com)  
**W** [www.sewerin.com](http://www.sewerin.com)

Technology leader for  
gas and water leak  
detection equipment



## HUBER SE – waste water solutions

HUBER SE, headquartered in Berching, Germany, is a worldwide active company in the field of water, wastewater and sludge treatment. At our headquarters in Berching, 700 employees develop and manufacture products, manage projects and develop system solutions for municipalities and industries. With more than 40,000 installations worldwide HUBER is one of the internationally leading companies in this field. HUBER's adapted treatment processes contribute to the solution of the global water problems. HUBER supports its customers in about 60 countries around the world through subsidiaries, offices or representatives by providing know-how and innovative products for water, wastewater and sludge treatment. The company has been family owned for more than 175 years and today utilises at its headquarters modern production facilities where a wide range of high quality products for the international markets are manufactured with the most advanced manufacturing technology and by highly qualified employees. Sustainability in the field of water utilization is a primary concern of HUBER and is reflected in a variety of HUBER SOLUTIONS offered for wastewater reuse and recovery of nutrients from wastewater and sludge.



HUBER offers reliable and efficient solutions for municipal and industrial waste water treatment. With a total of approximately 1,100 employees world-wide HUBER installations are successfully operated on all continents. More than 60 subsidiaries, offices and representations worldwide are available to perfectly meet the customer's specific requirements all over the globe.

### **HUBER SE**

Industriepark Erasbach A1  
92334 Berching  
Germany

**T** +49 8462 201164  
**F** +49 8462 201249  
**E** [ks@huber.de](mailto:ks@huber.de)  
**W** [www.huber.de](http://www.huber.de)

Innovative high quality machines, plants and stainless steel equipment for municipal and industrial water, wastewater and sludge treatment



## Your filtration specialist for process technology



HYDAC Process Technology GmbH is your partner for all filtration tasks from coarse to finest filtration in process engineering. Our product range comprises automatic backflushing filters, inline filters, filter elements as well as complete filter systems for nearly all industrial sectors.

Today, HYDAC Process Technology GmbH has a leading market position with a global service and distribution network. Our competence is the customer-oriented development of filters and filter elements with the highest demands on

quality and our local presence together with global networking. With the application of HYDAC Process Filters, you secure the function of processes, extend the service life of components, machines and systems, and increase the quality of the medium to be filtered. Your advantage: reduced maintenance and production costs and less strain on the environment.

**HYDAC Process  
Technology GmbH**  
Am Wrangelflöz 1  
Industriegebiet Grube König  
66538 Neunkirchen, Germany

**T** +49 6897 509-1241  
**F** +49 6897 509-1278  
**E** [prozess-technik@hydac.com](mailto:prozess-technik@hydac.com)  
**W** <https://waterfiltration.hydac.com>

Process Filters for effective solid separation from 1 µm absolute to 10,000 µm.

# inter3

INSTITUTE FOR RESOURCE MANAGEMENT

## Solutions for sustainable water and land management

The inter 3 Institute for Resource Management is a research and consultancy expert, combining technological, environmental and socio-economic approaches for sustainable resource management for over 20 years. The regional focus of our international activities is the Middle East & Africa. We work in this region on behalf of the World Bank, the EU Commission and various ministries, but also for water and wastewater utilities. The region is severely affected by water scarcity and climate change, so we have focused our work on the transformation to sustainable water and land use.



Our most important concern in international cooperation is to make the latest international research results usable on the ground: In water resource management and infrastructure, in land use and agriculture – in the city and in rural regions. Because the sustainable management of water and land is intricately connected, we specialise in integrated water and land management and offer the following services, among others, for these purposes:

- › Modelling and management of water resources, water reuse for agriculture and urban farming or industry.
- › Innovation management for the implementation of solutions on the ground: decision support, strategic roadmapping, acceptance, conflict management.
- › Further training for your employees to put operations and maintenance on a modern footing and secure them in the long term. For this purpose, we operate our own digital platform on topics such as water, wastewater or innovation management.

**inter 3 Institute for  
Resource Management**

Otto-Suhr-Allee 59  
10585 Berlin  
Germany

**T** +49 30 343474-40  
**F** +49 30 343474-50  
**E** mohajeri@inter3.de  
**W** www.inter3.de

Water resource management,  
water reuse, capacity  
development, decision support,  
strategic roadmap, acceptance,  
conflict management

# INTEWA

## Water, we're in our element

INTEWA GmbH develops and distributes products and systems in the areas of: Water treatment and reuse, as well as stormwater management – including infiltration and retention of stormwater. In order to constantly offer innovative and optimized solutions for these topics, INTEWA conducts continuous research and development.



As pioneers of rainwater technology, we have been in the market since 1993. From the very beginning, both the development of products and the planning of projects have been our main focus. The experience and competence of our employees is fed by the numerous development works and projects. We appreciate the exchange of experience within the association and beyond in our wide competence network of universities and colleges and business partners. Our customers with public, commercial or private construction projects are our top priority.

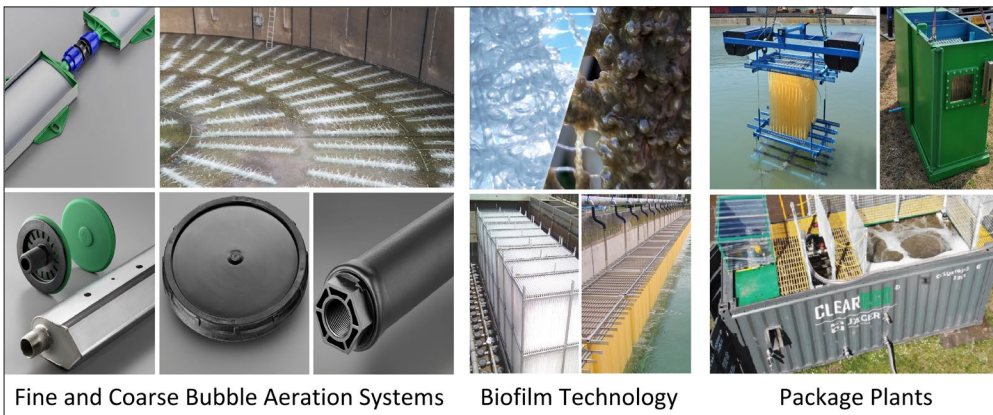
**INTEWA GmbH**  
Auf der Hüls 182  
52068 Aachen  
Germany

**T** +49 241 96605-0  
**F** +49 241 96605-10  
**E** [kumar@intewa.de](mailto:kumar@intewa.de)  
**W** [www.intewa.com](http://www.intewa.com)

Decentralized systems for  
water treatment, rainwater,  
greywater, wastewater and  
potable water.



## Energy efficiency and capacity increase for aerobic treatment processes



Jäger Umwelt-Technik GmbH (also known as Jaeger Envirotech) is the environmental division of Gummi-Jäger (a family business, founded in 1942 in Hanover, Germany) and a manufacturer and supplier of fine bubble membrane diffusers, coarse bubble diffusers, and fixed bed media which are utilized for centralized and decentralized (i.e. containerized) wastewater treatment systems.

Our success is based on continuous product innovation and zero-defect philosophy. With our branches and partners in Europe, Asia and the USA, we have installed millions of disc, tube, and strip diffusers as well as thousands of Cleartec® Biotextil and BioCurlz modules for various industrial (e.g. food and beverage) and municipal wastewater treatment plants.

**Jaeger Umwelt-Technik  
GmbH**

Lohweg 1  
30559 Hannover  
Germany

**T** +49 511 646444-19

**F** +49 511 646444-99

**E** E.MohammadPajoooh@  
jaeger-envirotech.com

**W** www.jaeger-envirotech.com

Wastewater Aeration,  
Integrated Fixed Film  
Activated Sludge (IFAS)  
system



## Your partner for sensor and automation solutions



JUMO is one of the leading manufacturers in the field of industrial sensor and automation technology. Today, the product spectrum from JUMO covers components and system solutions for the measurement, control, recording and analysis of physical and chemical parameters. The products range from sensors for temperature, pressure and analytical measurement to the control and recording of measurement data. These instruments and systems are used in a very wide variety of industries especially in the water and wastewater industry.

Whatever the requirements of measurement technology, JUMO always meets your needs. With the goal of guaranteeing consistent high quality water and treated wastewater, there is a need to perform reliable, accurate measurements, which can be controlled and monitored from a central location. Other than established products you will also find innovations such as the digital analysis sensors of the JUMO digiLine family. From the digital networking of sensors to easy accessibility of complete measuring points from the Internet, JUMO is setting standards for equipping the most modern plants in many different areas of the water and wastewater industry.

**JUMO GmbH & Co. KG**  
Moritz-Juchheim-Str. 1  
36035 Fulda  
Germany

Matthias Kremer  
**T** +49 661 6003-402  
**M** +49 170 2266982  
**E** matthias.kremer@jumo.net  
**W** www.jumo.net

Peer Hohage  
**E** peer.hohage@jumo.net  
**T** +49 661 6003-9584

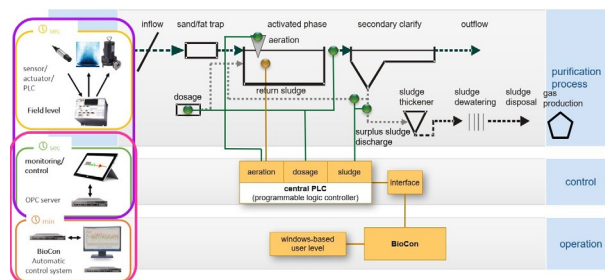
# KLEINE

Die Klärwerksoptimierer

## Optimised water treatment and supply

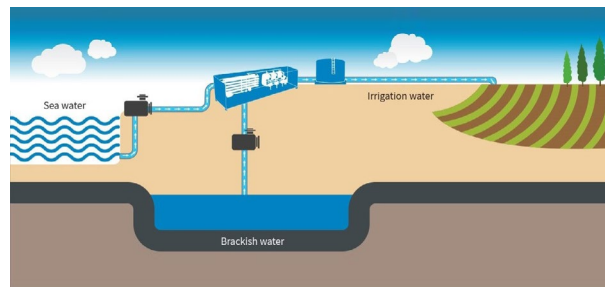
With our measuring and control technologies – the intelligent biology control system BioCon – we support wastewater treatment plants in a holistic way for

- › an automated operation
- › a high process stability
- › a high operational safety
- › lower discharge values
- › savings in energy and costs



With our sludge water discharge system TAS we provide the first step in the sludge management process for

- › reducing your sludge reliably
- › an improved degree of thickness
- › an increased storage capacity of the sludge tank
- › cost savings in further sludge processing, sludge transport and sludge disposal



With our equipment and technologies for irrigation we provide

- › new intelligent solutions and processes
- › for sources of different origin, including saline water

**KLEINE Solutions GmbH**  
Werftstr. 5  
20457 Hamburg  
Germany

**T** + 49 40 7891751  
**F** + 49 40 789175  
**E** mail@kleine.de  
**W** www.kleine.de

Automated water treatment,  
control technologies,  
water supply, irrigation



## Our technology. Your success.

As a company with a total sales volume of almost €2,3 billion, KSB is one of the world's leading suppliers of pumps, valves and associated systems. KSB products and systems are used in a large variety of applications ranging from building services, industry, water transport, waste water treatment and power plant processes.



Founded in Frankenthal (Germany) in 1871, KSB has a presence on all continents with its own sales and marketing organisations, manufacturing facilities and service operations. KSB currently manufactures pumps and valves in 16 countries and has a total workforce of 15,455 employees. The company also has 170 service centres and has more than 3,000 service staff to provide inspection, maintenance and repair services worldwide. The passion of KSB's employees for efficient and sustainable fluid transport can be vividly traced through the 150 years of the company's history – <https://www.ksb.com/ksb-en/About-KSB/KSB-History>.

The success of the company is founded on innovative technology that is the fruit of its own research and development program. KSB's research centres, focus their efforts on hydraulics, sealing technology, materials development and the automation of pumps and valves. Highly efficient equipment, energy-saving motors as well as devices for the control and monitoring of systems and their components, ensure high overall energy efficiency. KSB's activities are aimed at ensuring high customer satisfaction, building stable business relations and achieving sustainable and profitable growth.

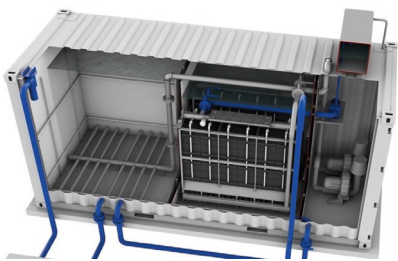
**KSB SE & Co. KGaA**  
Turmstraße 92  
06110 Halle (Saale)  
Germany

**T** +49 345 4826-5137  
**E** philip.storch@ksb.com  
**W** www.ksb.com

Pumps, valves, service,  
automation and engineering  
for water & waste water,  
energy, industry, oil & gas,  
building technology, mining  
and marine applications



## Life is good – with clean water



MBR package plant



Aqua Cube



mini Cube

MARTIN Systems GmbH (MARTIN) converts your polluted water into clear and high-quality water resource free of pathogens and hazardous wastes using innovative low-pressure membrane filters. MARTIN has installed more than 50,000 membrane filters in the field of maritime, municipal, and industrial wastewater treatment. MARTIN has succeeded in making membrane technology economically viable for worldwide applications. Our products are extremely durable and long-lasting, even under extreme conditions, thanks to the use of high-quality materials. MARTIN also offers compact container membrane bioreactor (MBR) plants for wastewater systems, offshore plants, ships (river and sea cruise ships). The small footprint of our compact containerized MBR units allows the system to be integrated into a natural, picturesque environment and treat wastewater for irrigation. Our membrane filters do not require regular chemical cleaning other than one or two maintenance cleanings per year.

MARTIN also offers low-cost, robust, and compact and mobile drinking water treatment systems (mini Cube, PAUL, Aqua Cube) based on modular membrane filtration modules. The water systems allow to use existing dirty water resources for specific purposes: process water in industrial application or drinking water in rural areas. The mini Cube can be used as household-filter; PAUL and Aqua Cube as decentralized water systems.

**MARTIN Systems GmbH**  
Dr.-Ing. Ordóñez, Jose  
Friedrichstraße 95  
10117 Berlin  
Germany

**T** +49 30 2005 970 0  
**M** +49 171 417 95 97  
**W** [www.martin-systems.com](http://www.martin-systems.com)

Large-scale and small-scale  
MBR systems, small-scale  
water systems, membrane  
module supplier



OUR AIM - YOUR CONFIDENCE

## Containerized package plants for water, wastewater & sludge treatment

MENA-Water is an engineering and manufacturing company that provides innovative solutions and services in the fields of water, wastewater and sludge treatment. MENA-Water offers both standard packaged plants and bespoke solutions for all your treatment requirements.



Containerized package plants are ready-made, plug and play solutions for wastewater, drinking water and sludge treatment. The complete plants are ready mounted as packaged units in standard ISO containers for easy, fast delivery and quick on-site installation. Superior design allows for minimal footprint and on-site civil works whilst ensuring outstanding, efficient performance and continuous, smooth operation. Built to last with certified manufacturing, stainless steel housing and European quality equipment ensures high quality and long life even as a permanent solution.

MENA-Water serves clients worldwide through two main offices in UAE and Germany, as well as through satellite & branch offices and partners situated across the globe. Being part of the HUBER Group, a large German technology company, provides MENA-Water with the knowledge, resources and structure to support our clients wherever they may be situated globally.

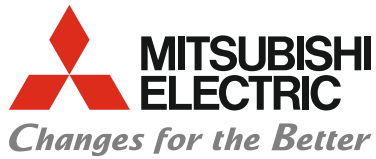
Specialized Package Solutions Include:

- › MBR/SBR/MBBR Sewage Treatment Plant(s)
- › Safe Drinking Water Treatment Plant
- › Reverse Osmosis & Ultra Filtration
- › Sludge Dewatering
- › Industrial Effluent Plants

**MENA WATER FZC**  
P.O. Box: 120881, Plot D3-11  
Sharjah Airport International  
Free Zone  
United Arab Emirates

**T** +971 6 5575507  
**F** +971 6 5575508  
**E** info@mena-water.com  
**W** www.mena-water.com

Please visit our website for further details on our full capabilities & plants offered.



## Advanced automation technologies for the water industry



© Getty Images/LeoWolfert

Mitsubishi Electric is a recognized world leader in the manufacture, marketing and sales of electrical and electronic equipment. Mitsubishi Electric's Factory Automation Division provides industry-leading hardware and software solutions for the individual needs of many industries. Our long list of achievements includes water and wastewater treatment facilities with the highest processing capacity. The brand is synonymous with innovative, high-quality industry automation solutions based on control and monitoring systems, high energy-efficient drive technologies as well as low and medium voltage power distribution products seamlessly integrated into high-performance DCS and SCADA solutions. Dedicated software solutions using sophisticated Artificial Intelligence provide smart and precise process control over all aspects of water supply and distribution for a significant reduction of water and energy losses, maintenance cost and an increased overall equipment efficiency. Mitsubishi Electric is your trusted partner for water automation solutions.

**Mitsubishi Electric Europe B.V.**  
**Factory Automation EMEA**  
Mitsubishi-Electric-Platz 1  
D-40882 Ratingen  
Germany

**T** +49 2102 486-0  
**F** +49 2102 486-7780  
**E** [info@mitsubishi-automation.com](mailto:info@mitsubishi-automation.com)  
**W** <https://eu3a.mitsubishielectric.com>

Efficiency  
through  
automation

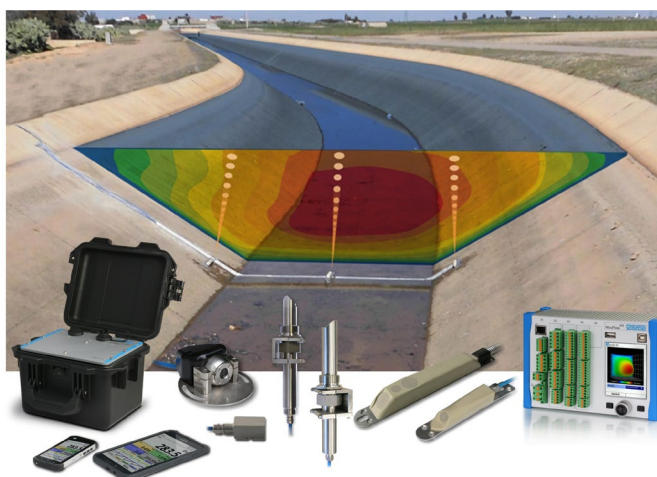


## Flow and level measurement and intelligent data handling

The NIVUS Group is a worldwide leader for measurement technology in clean and wastewater. Apart from developing, manufacturing and supplying the complete range of products for flow, level and total suspended solids as well as the corresponding communication interfaces, we are also experts in the field of consulting and engineering.

Our application spectrum comprises flow, level and particles measurement as foundation of hydrological model computing, process assessments and billing for

- › Surface waters
- › Hydropower and cooling water
- › Irrigation
- › Wastewater channel networks
- › Water supply



Moreover, NIVUS for approx. 20 years provides control and telecontrol systems and today has a consistent platform for automation, software and cloud services. NIVUS have been certified according to ISO 9001 since 1995 and ATEX since 1999. Since then, ISO 14001 certification, the M-CERTS certificate and the IECEx scheme have been added.

The company head office is located in Eppingen/Germany. With 9 international subsidiaries and more than 40 distributing partners worldwide the company acts on a global base.

**NIVUS GmbH**  
Im Taele 2  
75031 Eppingen  
Germany

**T** +49 7262 9191-0  
**F** +49 7262 9191-999  
**E** info@nivus.com  
**W** www.nivus.com

Flow and Level Measurement  
in Water and Wastewater

# PHOENIX CONTACT

## Solutions for water and wastewater treatment

Phoenix Contact is the worldwide market leader of components, systems and solutions in the area of electrical engineering, electronics and automation. Today, the family-owned company employs 17,400 people worldwide and had a turnover of more than 2.4 billion euros in 2019. The Phoenix Contact Group has fourteen companies in Germany as well as more than 55 sales subsidiaries. In addition, the worldwide presence is consolidated by 40 representations in Europe and Overseas. The product



range comprises components and system solutions. A diverse product range of modular terminal blocks, plug connectors and cable connection technology, automation systems as well as software provide installers and operators of systems as well as device manufacturers with comprehensive systems.

With a team that is networked across the world and collaborations with industry partners, Phoenix Contact is a reliable partner for water management. Phoenix Contact provides automation, communication and remote control technology for drinking water and wastewater systems, as well as process automation in water and wastewater treatment plants. The tailor-made solutions rely on open interfaces, from the control room, to the network and control levels, to the field level. Comprehensive engineering and training services provide professional support that is tailored to requirements during all phases of project.

**PHOENIX CONTACT GmbH & Co. KG**  
Flachsmarktstr. 8  
32825 Blomberg  
Germany  
**T** +49 5281 946-2280  
**E** fpasimani@phoenixcontact.com  
**W** www.phoenixcontact.com

**Phoenix Contact SARL**  
Lotissement la Colline Lot 37-38  
Sidi Maârouf – Casablanca  
Maroc – 20190  
**T** +212 52 27 87 85 8  
**E** yasmi@phoenixcontact.com

**PHOENIX CONTACT Middle East FZ LLC**  
1201N-1206N, HQ Complex  
Dubai Science Park  
P.O. Box 345002, Dubai, United Arab  
Emirates  
**T** +971 4 437 0324-340  
**E** pmenon@phoenixcontact.com

# PRIMUS LINE

## Unique system for trenchless pipe rehabilitation

Primus Line® is a flexible sliplining solution for the trenchless rehabilitation of pressure pipelines referenced in EN ISO 11295:2018-06. The system consists of a flexible aramid-reinforced liner and specially developed end fittings. The liner is self-supporting and not attached to the host pipe – an annular space remains. Developed by experienced engineers, the system is suitable for different media as well as various other applications and has already proven itself in numerous projects: Besides the rehabilitation of damaged pipelines, it can also be used to increase the pressure within existing systems, protect them from corrosion and build bypass systems or stand-alone solutions. The Primus Line® system is certified in many countries – for example Australia, the USA, Germany, Canada and Israel – and meets the highly demanding standards for the transportation of drinking water worldwide. Primus Line® is available in nominal diameters ranging from DN 150 to DN 500 (6 inches to 20 inches).



### Benefit from

- › cost savings of up to 40% compared to other trenchless technologies
- › installation speeds of up to 10 metres per minute
- › up to 2,500 metres per pull
- › small pits, minor installation footprint
- › maximum capacity (low wall thickness of 6 mm for PN 16)
- › increased operation pressure independently of the host pipe

**Rädlinger primus line GmbH**  
Kammerdorfer Straße 16  
93413 Cham  
Germany

**T** +49 9971 8088-0  
**F** +49 9971 8088-9999  
**E** [info@primusline.com](mailto:info@primusline.com)  
**W** [www.primusline.com](http://www.primusline.com)

Trenchless rehabilitation  
of pressure pipelines, water  
and wastewater



## Water is our profession

PWT Wasser- und Abwassertechnik GmbH is one of the internationally leading German contractors in the field of Design, Build and Operation of infrastructure projects for water and wastewater treatment. We have more than 50 years' experience in the realization of turnkey and O&M projects for urban water supply, water treatment for



industrial purposes, urban and industrial wastewater treatment, desalination and groundwater depollution. We are dedicated to develop and to execute tailor-made case-by-case solutions for our clients and our technical expertise guarantees long-term sustainable investments. Our core market is the Middle East, the North Africa Region, the South Eastern and Central Europe and Central Asia, where we are currently executing large projects in sewage and desalination for private and major public clients. The solution of your problems is a challenge we readily accept.

Our Core Competences:

- › Drinking Water Treatment Plants
- › Desalination Plants
- › Waste Water Treatment Plants
- › Industrial Solutions (Process Water Treatment, wastewater, recycling, re-use, zero-liquid discharge)
- › Containerized solutions
- › Operation and Maintenance
- › Instrumentation, Control and Automation
- › The mobile operations management system PRAMOS®

**PWT Wasser- und  
Abwassertechnik GmbH**  
Platanenallee 55  
64673 Zwingenberg  
Germany

**T** +49 6251 980-0  
**F** +49 6251 980-498  
**E** [info@pwt.de](mailto:info@pwt.de)  
**W** [www.pwt.de](http://www.pwt.de)

Design, construction and  
operation of treatment plants  
for drinking water, wastewater  
and process water.

# p2mberlin

## Sustainability in water and wastewater from Berlin

p2m berlin GmbH is a specialized consulting engineering company, which offers expert services in the water and wastewater sectors, covering all project stages from master planning and feasibility studies, to design, construction supervision and commissioning.



p2mberlin implements technical

and economic engineering knowledge of the Berlinwasser Group, which has provided water supply and sanitation services for Berlin for over 160 years. Our core competences include consulting engineering services for project management, quality management, design, tendering, site supervision and commissioning of infrastructure as well as training and technical advice on operation and maintenance. p2m berlin is a reliable, responsible and independent government owned partner, without any private or third party interest. We possess the necessary key qualifications to successfully fulfil our client's water and wastewater project needs. Our multi-national and interdisciplinary team of experts provides competency in the fields of:

- › Water and Wastewater Engineering: We provide state-of-the-art technical know-how based on the highest technological standards to ensure best practice solutions in drinking water supply, wastewater management and sanitary engineering.
- › Sludge Management: With our sustainable and complete reuse approach we provide complete sludge management services, including integrated and sustainable reuse schemes, design services for sludge treatment and thermal processing plants from sludge thickening to sludge incineration.

**p2m berlin GmbH**  
Huttenstraße 34/35  
10553 Berlin  
Germany

**T** +49 30 74735-0  
**F** +49 30 74735-400  
**E** [info@p2mberlin.de](mailto:info@p2mberlin.de)  
**W** [www.p2mberlin.de](http://www.p2mberlin.de)

Ecological and economical  
solutions for water,  
wastewater and sludge  
management



## Aeration at its finest!



RUDOLF MESSNER UMWELTECHNIK AG has established itself over the past decades as a successful company in the biological process and aeration technology for municipal and industrial wastewater treatment plants. Efficiency, high quality and long service life are the most important features of modern aeration systems to operate biological wastewater treatment plants economically and ecologically. We meet these requirements with our aeration system, based on the MESSNER Aeration Panels, with their optimal integration into the whole wastewater cleaning process in an excellent way.

**RUDOLF MESSNER  
UMWELTECHNIK AG**  
Hochstadter Straße 33a  
91325 Adelsdorf  
Germany

**T** +49 9195 807-0  
**F** +49 9195 807-40  
**E** mg@rmu.de  
**W** www.rmu.de

Specialised in high efficient  
aeration systems for biological  
wastewater treatment!

# sachsen Wasser

consulting + operations + management

## Consulting & operating in one hand

We are a specialized consulting company in the field of water supply and sanitation with the particular focus on water utility advisory and training as well as operations and maintenance (O&M). Our company is based in Leipzig and operates worldwide. Sachsen Wasser was founded in the year 2000 as a 100% subsidiary of one of the largest municipal water and sanitation utilities. However, since 2015, we operate as an independent consulting and operating company.



Our experts have first-hand experience in transformation and change management. They specifically focus on evolving utilities from a formerly inefficient, overstaffed and subsidized political institutions to modern, market- and customer-faced service companies with process-driven structures and state-of-the-art management tools.



SaWa offers services in operation of water and sanitation systems but we have also a long track record of successful international consulting and training projects to strengthen ministries, municipalities and utilities in institutional, commercial, financial and technical issues, with focus on O&M, energy efficiency and climate change adaptation, to improve the resilience in the region. Therefore a strong stakeholder involvement and customer relation is our basis.

We have implemented numerous projects for utilities in Central/East Asia, Latin America, South-Eastern Europe, the Middle East and Africa.

**Sachsen Wasser GmbH**  
Stephanstraße 4  
04103 Leipzig  
Germany

**T** +49 341 99198100  
**F** +49 341 99198101  
**E** [info@sachsenwasser.com](mailto:info@sachsenwasser.com)  
**W** [www.sachsenwasser.com](http://www.sachsenwasser.com)

Consulting, Operations &  
Maintenance, Capacity/  
Corporate Development,  
Energy Efficiency, Training



## Together for more water with STÜWA



As a family-run business we are a leading manufacturer of high-quality well-construction technology. We are able to look back on over 130 years of Made in Germany experience and expertise in the production of well screens in PVC/steel and stainless steel, as well as geothermal products and drilling accessories.

Innovative solutions in the field of water extraction, water retention, water discharge and utilising close to the surface

geothermal heat sources are now being developed and produced under the management of the fourth generation. Based on intensive consultation and cooperative exchange of ideas with our partners, the optimal complete solutions are always found.

### Field of activity

- › Municipal water management
- › Industry
- › Agriculture
- › Raw material extraction
- › Structural and civil engineering
- › Renewable energies

**STÜWA Konrad  
Stükerjürgen GmbH**  
Hermersweg 80  
33397 Rietberg  
Germany

**T** + 49 5244 407-0  
**F** +49 5244 407-42  
**E** info@stuewa.de  
**W** www.stuewa.de

Water supply and storage/ASR,  
bottler, food and beverage,  
mining, soil remediation, etc.

## Research in industrial wastewater treatment

The Chair of Environmental Process Engineering has extensive expertise in the field of industrial and municipal wastewater treatment. The main research areas are the production-integrated water recycling and reuse, the recovery of valuable substances from



production wastewater, the treatment of concentrates from water reuse processes and the elimination of trace substances as well as the modeling of industrial water cycles.

One of the current projects ATLANTIS which is funded by the German Ministry for Research and Education (BMBF) explores the potentials of sewage treatment plants as resources for water, energy and nutrients exemplary in Egypt. This includes the anaerobic digestion of the sewage sludge and the optimization of the whole treatment process. The monitoring of the plant conditions by IT based solutions and the integration of renewable energies on the plant areas can convert wastewater treatment plants into power plants.

Another field of expertise is the seawater desalination with thermal and mechanical energy provided by renewable sources. Here, the environmental impacts of the brines, zero-liquid discharge technology and the potential recovery of valuable minerals are research objectives of the Chair of Environmental Process Engineering. Several research projects funded by the German Ministries have been conducted during the last years to investigate different treatment technologies for the recycling of industrial effluents and the recovery of valuable materials.

**TU Berlin, Department of Environmental Technology**  
 Chair for Environmental Process Engineering, Office KF 2  
 Straße des 17. Juni 135  
 10623 Berlin, Germany

**T** +49 30 31425-086  
**F** +49 30 31425-487  
**E** [info@uvt.tu-berlin.de](mailto:info@uvt.tu-berlin.de)  
**W** [www.uvt.tu-berlin.de](http://www.uvt.tu-berlin.de)

Consulting for industrial wastewater treatment, capacity building, research and education



# WATERLEAU

protecting the 4 elements

## Protecting the Blue Planet

Our mission is to protect one of the world's key resources: water. We are a pioneer in the design and construction of water and wastewater treatment infrastructure, managing the complete water cycle: from process water and drinking water production, over wastewater treatment to energy, water and nutrient recovery. Our solutions for water recovery minimize the water footprint by recycling wastewater into sanitary water, process water or even drinking water.



Our Operation & Maintenance services keep our customers' business focused while we take care of discharge compliance and infrastructure efficiency. Our digital asset management ensures optimized operation, updates customers on their KPI's and offers managers total peace of mind.

We've acquired over 20 years of expertise both in industrial and municipal markets. In the municipal field we are a market leader in Morocco and Macau where we build and operate sustainable wastewater treatment solutions including tertiary treatment for reuse applications and full sludge management. With regional hubs in Morocco, Egypt, Ivory Coast and South Africa, we support projects throughout Africa.

Proprietary technologies of Waterleau, such as: LUCAS, KROFTA and BIOTIM, can be implemented as technological packages into various infrastructure projects.

We are committed to protect the blue planet and embrace the circular economy. In our holistic approach to zero waste, we redefine wastewater into a mixture of water, energy and nutrients.

### Waterleau Deutschland GmbH

[www.waterleau.com](http://www.waterleau.com)

Wastewater treatment,  
water recovery, energy from  
wastewater, drinking water,  
process water production

Dr. Martin Brockmann

T +49 421 62657-0

E [martin.brockmann@waterleau.com](mailto:martin.brockmann@waterleau.com)

Habib Yahyi

T +212 5228-12242

E [habib.yahyi@waterleau.com](mailto:habib.yahyi@waterleau.com)



## Partner for sustainable solutions



Water. Energy. Environment Professionals – WEE Pros GmbH is an international management consulting firm based in Bonn, Germany. We provide a variety of consulting services (Technical Assistance, Feasibility Studies, Capacity Development and Institutional Development) for utilities, public authorities and donor agencies in the fields of water, wastewater, energy and environment. We believe in knowledge exchange and technology transfer in a multicultural context to solve the vicious problems hindering the principles of sustainable development. Our team provides integrated services & consultation in water, energy and environment (WEE) sectors aiming at developing sustainable management systems.

We work hand in hand with utilities, donor agencies, institutions, public authorities and organizations that are developing and/or operating WEE projects, and seek good practices and innovative concepts to overcome challenges facing WEE sectors. WEE Pros is active in the MENA region. WEE Pros team brings the benefit of a diverse knowledge working with public utilities, private sector local communities and international donor agencies. We help our clients in analyzing problems and offer adequate solutions.

**WEE Pros GmbH**  
Godesberger Allee 139  
Bonn 53175  
Germany

**T** +49 228 37287784/3  
**F** +49 228 53688728  
**E** info@weepros.de  
**W** www.weepros.de

Management and capacity  
development expert for water  
and wastewater utilities



## German Water Partnership

German Water Partnership e. V.  
Reinhardtstr. 32  
10117 Berlin  
GERMANY

+49 30 300199-1220  
[info@germanwaterpartnership.de](mailto:info@germanwaterpartnership.de)  
[www.germanwaterpartnership.de](http://www.germanwaterpartnership.de)